

# Biogeochemistry of porewater in boreal sandy beach

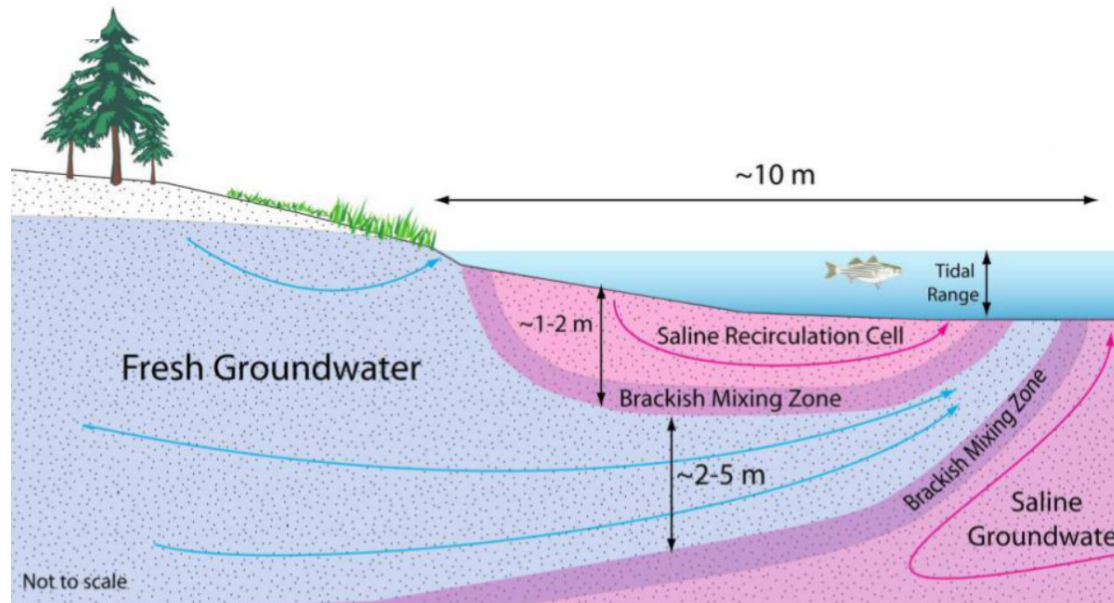


**Poster on Monday**

**Carbon dynamics at the land-ocean interface  
through a boreal subterranean estuary**

**Mathilde Couturier**

Maude Sirois, Christian Nozais, Gwénaëlle Chaillou



Hydrogeology

**Biogeochemical  
processes**

**Bacterial  
compartment**

**Origin and composition of organic matter inputs**

# Study site

Iles de la Madeleine, Québec, Canada



March

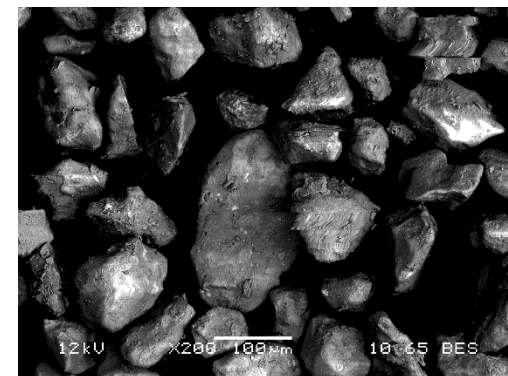
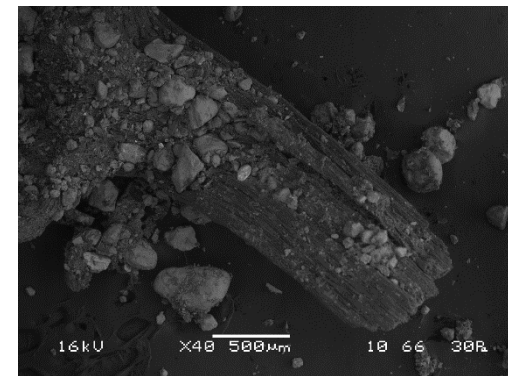
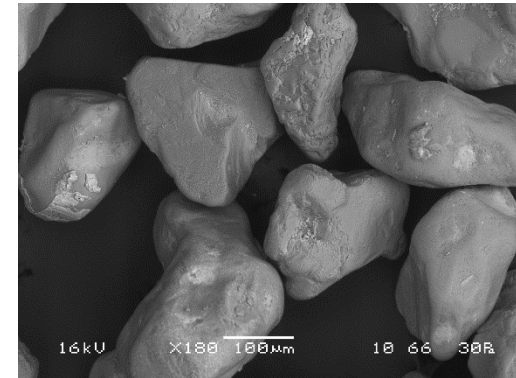
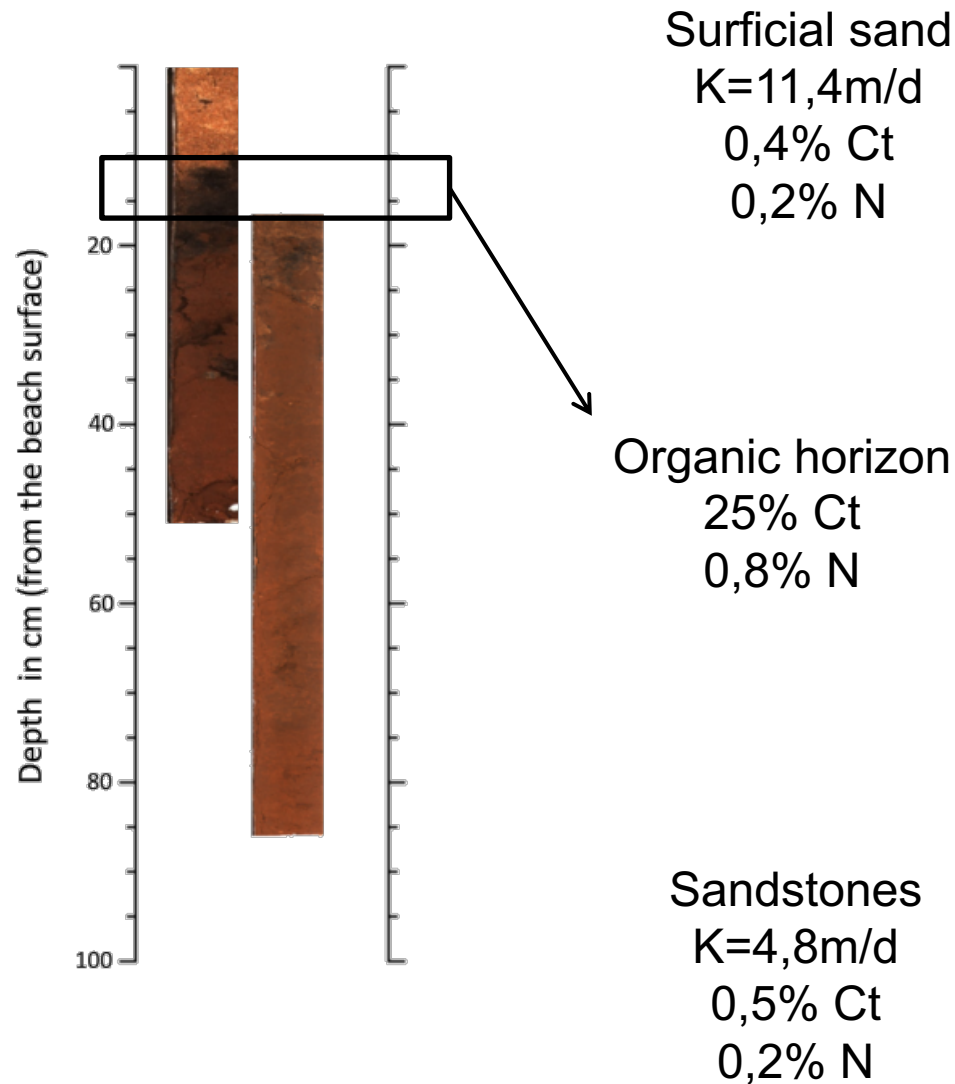


June





# Characteristics



# Carbon dynamics at the land-ocean interface through a boreal subterranean estuary

- What is the composition and the origin of organic matter through the STE

optical (CDOM) and isotopic ( $\delta^{13}\text{C}$ -DOC) approach

- Link the organic matter origin and composition to the free bacteria abundance and diversity

