



BCO-DMO: News and Updates

DANIE KINKADE

BIOLOGICAL AND CHEMICAL OCEANOGRAPHY
DATA MANAGEMENT OFFICE

WOODS HOLE OCEANOGRAPHIC INSTITUTION

OCB Summer Meeting ~ Woods Hole, MA ~ 26 June 2017

NSF OCE & OPP DATA MANAGEMENT

Mission:

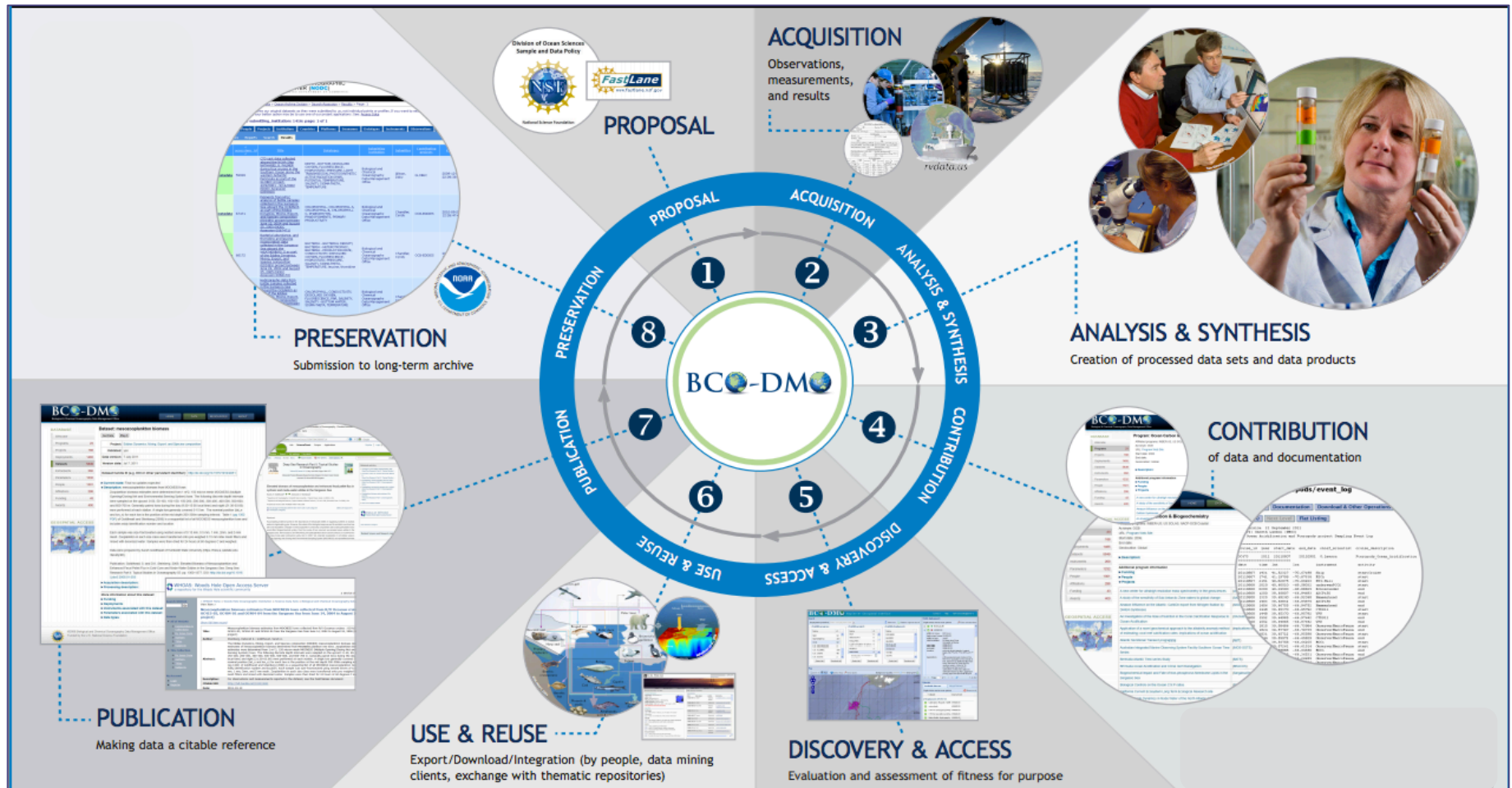
To provide data management support services **at no cost** to PIs funded by NSF Biological and Chemical Oceanography Sections and Office of Polar Programs Antarctic Organisms and Ecosystems.




NSF OCE, OPP ANT




NSF OCE & OPP DATA MANAGEMENT



PROPOSAL SUPPORT



HomeMy DashboardDMP RequirementsPublic DMPs

Woods Hole Oceanographic Institution

My Dashboard | My DMPs | Create New DMP | My Profile

SELECT DMP TEMPLATE

Select one of the funder DMP Templates listed to proceed to the next step. The type of template information you will need to provide in the following steps.

A - F

G - L

M - S

T - Z

All

☐ Alfred P. Sloan Foundation

☐ Department of Defense

☒ Department of Energy (DOE)

☐ Department of Transportation

☐ MBLWHOI Library Template

☐ National Aeronautics and Space Administration

☐ National Institute of Justice (DOJ)

☒ National Institutes of Health

☒ National Science Foundation

☐ NSF-AST: Astronomical Sciences

☐ NSF-BIO: Biological Sciences (2015-)


☐ NSF-CHE: Chemistry Division

☐ NSF-CISE: Computer and Information Science and Engineering

☐ NSF-DMR: Materials Research


☐ NSF-EAR: Earth Sciences

☐ NSF-EHR: Education and Human Resources



Welcome! Danie Kinkade

HomeMy DashboardDMP RequirementsPublic DMPsNewsHelpContact UsAboutLog Out

Woods Hole Oceanographic Institution

My Dashboard | My DMPs | Create New DMP | My Profile

DMP OverviewDMP DetailsDMP Preview

Plan was successfully created.

DMP DETAILS

BCO-DMO NSF OCE: Biological and Chemical Oceanography

Click on a section below to edit it at any time.

☒ = Complete

* = Mandatory

Template Outline

Data Policy Compliance

Pre-Cruise Planning

Description of Data Types*

Data and Metadata Formats and Standards*

Data Storage and Access During the Project*

Mechanisms and Policies for Access, Sharing, Re-Use, and Re-Distribution*

Plans for Archiving*

Roles and Responsibilities

Instructions

Links

Example Response

Identify any published data policies with which the project will comply, including the NSF OCE Data and Sample Policy as well as other policies that may be relevant if the project is part of a large coordinated research program (e.g. GEOTRACES).

Cancel Changes

Save Response

Save and Next


<< Back

DMP Preview >>

STEPS FOR DATA CONTRIBUTORS



DATA PUBLICATION




Biological & Chemical Oceanography Data Management Office

[DATA](#) [RESOURCES](#) [ABOUT US](#)

DATABASE

Programs	39
Projects	819
Deployments	2605
Datasets	8754
Instruments	447
Parameters	1396
People	2323
Affiliations	527
Funding	83
Awards	1564

GEOSPATIAL ACCESS



CONTRIBUTE DATA

Getting started

- » [How-to Guide](#)
- » [FAQs](#)

Metadata Forms (.rtf files)

- » [Program Metadata Form](#)

Dataset: Acropora palmata genotypes

[Get Data](#) [Cite This Dataset](#)

Project: RAPID: surviving climate change - the role of acclimatization in reef-building corals (Surviving Climate Change)
Principal Investigator: Dr Iliana B. Baums (Pennsylvania State University , PSU)
Co-Principal Investigator: Dr Dana E. Williams (University of Miami Rosenstiel School of Marine and Atmospheric Science, UM-RSMAS)
Contact: Meghann Durante (Pennsylvania State University , PSU)
Data Manager: Danie Kinkade (Woods Hole Oceanographic Institution, WHOI BCO-DMO)
BCO-DMO Data Manager: Danie Kinkade (Woods Hole Oceanographic Institution, WHOI BCO-DMO)
Validated: Yes
Data version: 2016.01.22
Version Date: 2016-01-22
Data URL: https://www.bco-dmo.org/dataset/636335/data
Current State: In progress


[Expand/Collapse All](#)

▼ **Description**

Acropora palmata genotypes derived from microsatellite markers collected from multiple reefs in the Florida Keys National Marine Sanctuary from 2005-2014 (Surviving Climate Change project)

Acropora palmata multilocus genotypes derived from five microsatellite markers.

DATA PUBLICATION



Biological & Chemical Oceanography Data Management Office

DATA RESOURCES ABOUT US

DATABASE

Programs	39
Projects	819
Deployments	2605

Dataset: Acropora palmata genotypes

[Get Data](#) [Cite This Dataset](#)

Data Citation:

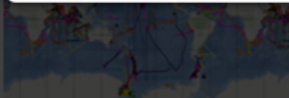
Baums, Iliana and Williams, Dana (2016) Acropora palmata genotypes derived from microsatellite markers collected from multiple reefs in the Florida Keys National Marine Sanctuary from 2005-2014 (Surviving Climate Change project). Biological and Chemical Oceanography Data Management Office (BCO-DMO). Dataset version 2016-01-22 [if applicable, indicate subset used].

<http://lod.bco-dmo.org/id/dataset/636335> [access date]

Terms of Use

All data sets are licensed under a [Creative Commons Attribution 4.0 International License \(CC BY 4\)](#). Per the CC BY 4 license it is understood that any use of the data set will properly acknowledge the individual(s) listed above using the suggested data citation. If you wish to use this data set, it is highly recommended that you contact the original principal investigator(s) (PI). Should the relevant PI be unavailable, please contact BCO-DMO (info@bco-dmo.org) for additional guidance. For general guidance please see the BCO-DMO [Terms of Use](#) document.

Need a DOI? [Email us](#) about this dataset.



Data URL: <https://www.bco-dmo.org/dataset/636335/data>

Current State: In progress

CONTRIBUTE DATA

Getting started

- » [How-to Guide](#)
- » [FAQs](#)

Metadata Forms (.rtf files)

- » [Program Metadata Form](#)

Expand/Collapse All

▼ **Description**

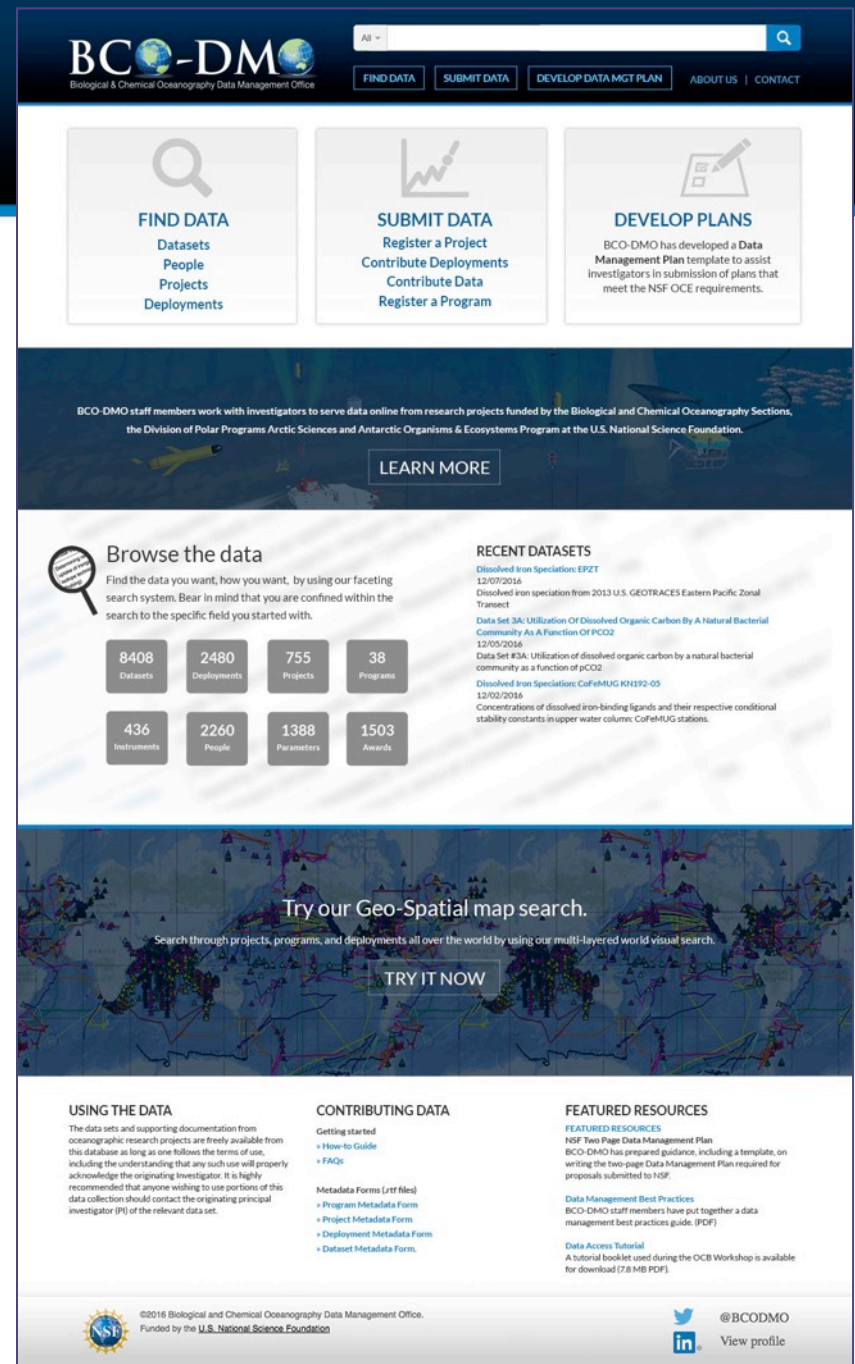
Acropora palmata genotypes derived from microsatellite markers collected from multiple reefs in the Florida Keys National Marine Sanctuary from 2005-2014 (Surviving Climate Change project)

Acropora palmata multilocus genotypes derived from five microsatellite markers.

COMING SOON...

Website Redesign

We need your feedback!



THE BCO-DMO TEAM



LEADERSHIP TRANSITION

Original Principal Investigators:

Peter Wiebe



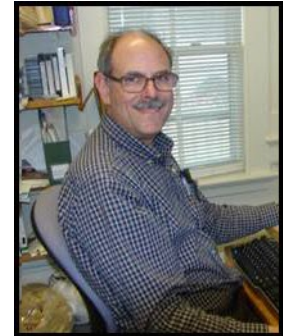
Cyndy Chandler



Dave Glover



Bob Groman



LEADERSHIP TRANSITION

Incoming Principal Investigators:

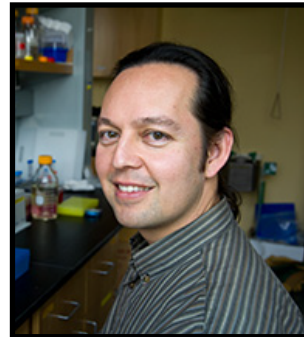
Peter Wiebe



Danie Kinkade



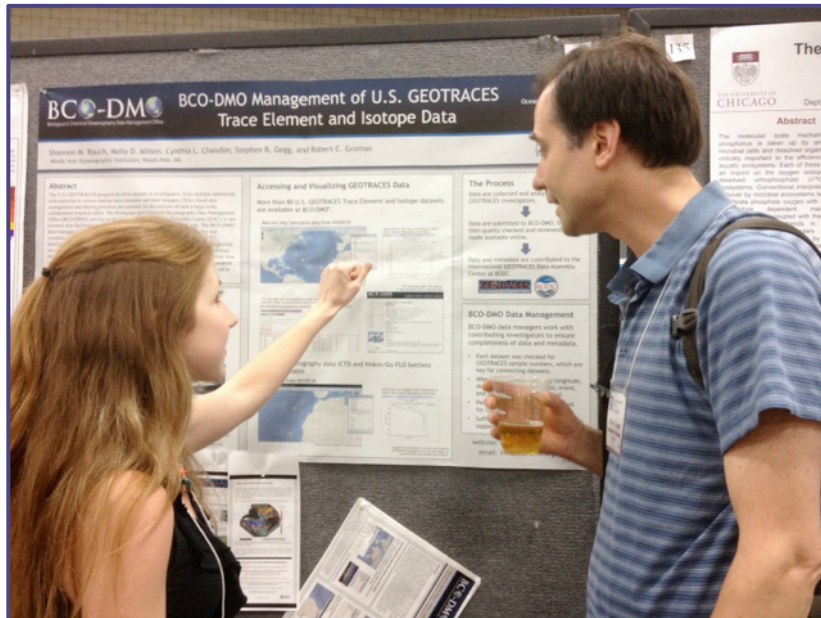
Mak Saito



Adam Shepherd



BCO-DMO AT OCB



Look for us at the poster sessions!



Biological & Chemical Oceanography Data Management Office

<http://bco-dmo.org>

TUTORIAL 2017 OCB SUMMER WORKSHOP

Table of Contents

How to Submit Data	2
Data access: TEXT-BASED SEARCH	5
scenario 1: You have a general idea of what you are looking for	5
Data access: MAP BROWSE	13
scenario 2: You are interested in data from a particular geographic region	13
Data access: MAP KEYWORD SEARCH	21
scenario 3: You are interested in data of a particular type from a particular geographic area	21
Data access: MAP SEMANTIC SEARCH	24
scenario 4: You have an idea what you are looking for, but you do not know the Program, Project, or Deployment name	24
Glossary of Terms	30
Acknowledgments	30
Follow BCO-DMO	30

Tutorial: Tuesday, lunchtime, Smith Conf Rm

<https://goo.gl/B6ufYD>

DISCOVERY AND ACCESS

BCO-DMO
Biological & Chemical Oceanography Data Management Office

DATARESOURCESABOUT US

Enter search terms

DATABASE

New Entry	
Programs	39
Projects	798
Deployments	2564
Platforms	541
Datasets	8667
Instruments	445
Parameters	1394
People	2293
Affiliations	524
Funding	83
Awards	1529
Contact Status	270
Archive	212

Account: dkinkade
Logout

Introduction to BCO-DMO

It's not the size of the data...
it's the impact of the science

Ocean researchers collect data using a variety of platforms, instruments and sensors. Each individual data set may be small, but when integrated and combined with laboratory experiments and model results they enable BIG science.

The Biological and Chemical Oceanography Data Management Office (BCO-DMO) [staff members](#) work with investigators to serve data online from research projects funded by the Biological and Chemical Oceanography Sections, the Division of Polar Programs Arctic Sciences and Antarctic Organisms & Ecosystems Program at the U.S. National Science Foundation.


Contributing Data or Other Project Results

If you would like more information about BCO-DMO or information about contributing data to the BCO-DMO collection, please see our [Resources page](#) or [contact us](#).

RECENT DATASETS
[Atlantic Silverside \(Menidia Menidia\) Genetic Accessions](#)
04/06/2017
Atlantic silverside (Menidia menidia) cDNA transcriptome and TSA accessions
[Core Top Major Elements](#)
04/06/2017
Core-top (0-1cm) sediment data from GEOTRACES EPZT (GP16) cruise
[Spawning Cruise ADCP](#)
03/28/2017
ADCP water column data from a cruise inside Coos Bay in March 2014
[Carbon Flux](#)
03/27/2017
Sponge species carbon flux
[Gross Oxygen Production](#)
03/22/2017
All measurements used in the gross oxygen production estimates

FEATURED RESOURCES
[NSF Two Page Data Management Plan](#)

DISCOVERY AND ACCESS



Biological & Chemical Oceanography Data Management Office

DATA

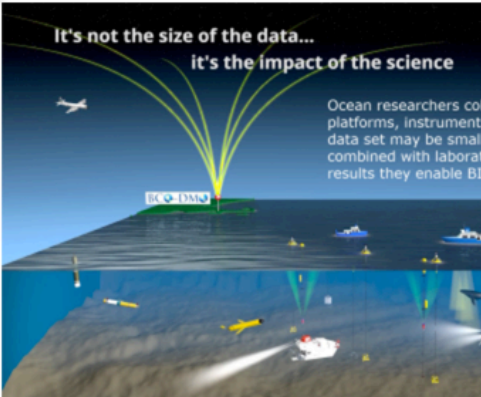
DATABASE

New Entry	
Programs	39
Projects	798
Deployments	2564
Platforms	541
Datasets	8667
Instruments	445
Parameters	1394
People	2293
Affiliations	524
Funding	83
Awards	1529
Contact Status	270
Archive	212

Account: dkinkade

Logout

Introduction to BCO-DMO




The Biological and Chemical Oceanography Data Management Office (BCO-DMO) staff members work with investigators from research projects funded by the Biological and Chemical Oceanography Sections, the Division of Polar Programs, and the Antarctic Organisms & Ecosystems Program and the National Science Foundation.

Contributing Data or Other Project Related Information

If you would like more information about BCO-DMO or how to contribute data to the BCO-DMO collection, please contact us.



DISCOVERY AND ACCESS



Biological & Chemical Oceanography Data Management Office

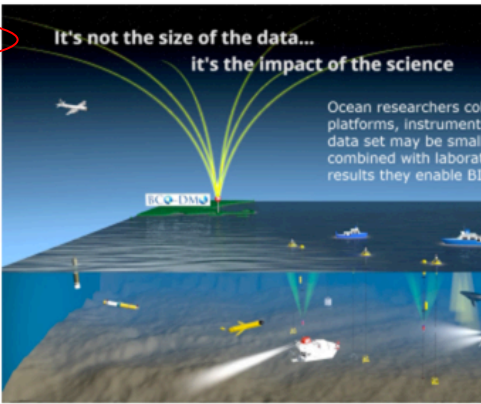
[DATA](#)

DATABASE

New Entry	
Programs	39
Projects	798
Deployments	2564
Platforms	541
Datasets	8667
Instruments	445
Parameters	1394
People	2293
Affiliations	524
Funding	83
Awards	1529
Contact Status	270
Archive	212

Account: [dkinkade](#)
Logout

Introduction to BCO-DMO



It's not the size of the data...
it's the impact of the science

Ocean researchers collect data from various platforms, instrument data set may be small, but combined with laboratory results they enable BI...

The Biological and Chemical Oceanography Data Management Office (BCO-DMO) [staff members](#) work with investigators from research projects funded by the Biological and Chemical Oceanography Sections, the Division of Polar Programs, and the Antarctic Organisms & Ecosystems Program at the National Science Foundation.

Contributing Data or Other Project Resources

If you would like more information about BCO-DMO or how to contribute data to the BCO-DMO collection, please contact [us](#).

